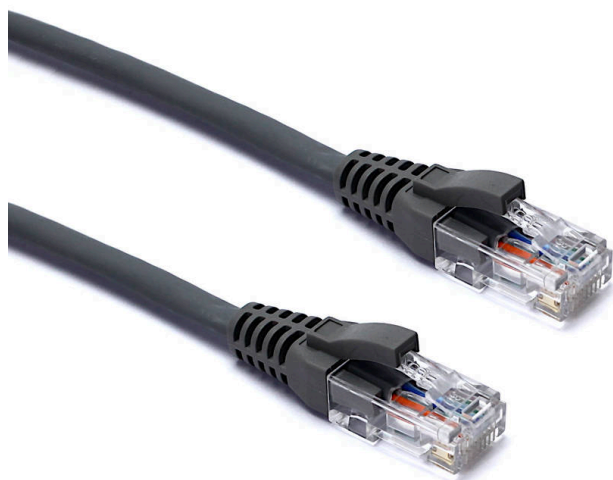


# Excel Cat6 Patch Lead U/UTP Unshielded LSOH Blade Booted 0.5m Grey (10-Pack)

Item Code: 100-395-10

**excel**  
without compromise.



✕ Cat6 compliant

✕ Backward compatible

✕ Independently verified

✕ Choice of colours and lengths

✕ Blade style "slimline" moulded strain relief boot with clip protector

✕ LSOH outer sheath

## Product Overview

Excel Category 6 U/UTP patch leads are manufactured and tested to ISO 11801, EN 50173 & TIA/EIA 568 requirements for patch cord assemblies and provide optimum performance levels for structured cabling installations.

## Product Specifications

Feature	Values
Cable type	U/UTP
Category	6
Length	0.5 m
Type of connector connection 1	RJ45 8(8)
Type of connector connection 2	RJ45 8(8)
Outer sheath colour	Grey
Strain relief boot	Moulded-on
Lockable	no
Strain relief boot colour	Grey
Flame retardant version	yes
Halogen free	yes
Cable construction	1x4

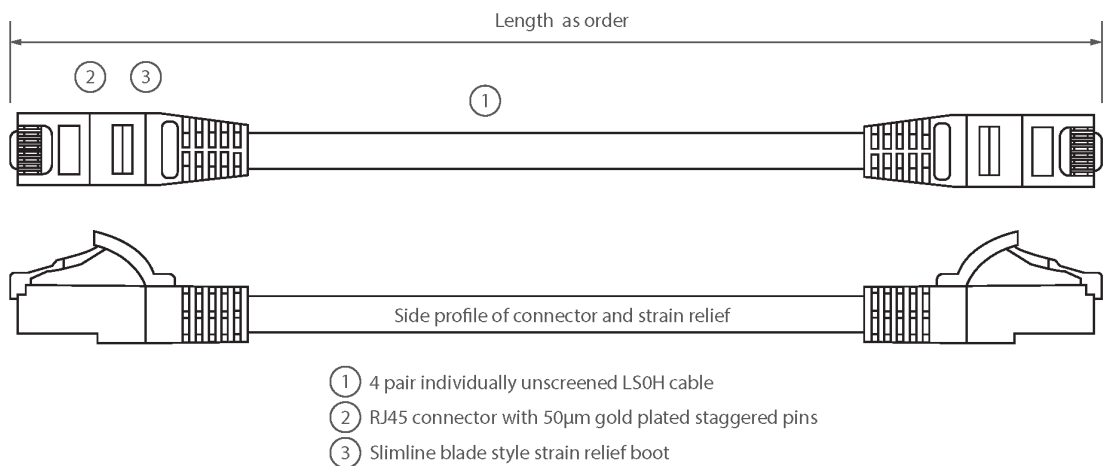
# Excel Cat6 Patch Lead U/UTP Unshielded LSOH Blade Booted 0.5m Grey (10-Pack)

Item Code: 100-395-10



AWG-size	24
Pin assignment	1:1

## Product drawing



## Standards

Applicable standard	Detail
ISO/IEC 11801-1:2017	Information technology - Generic cabling for customer premises: Part 1 General Requirements
EN 50173-1:2018	Information technology. Generic cabling systems - General requirements
ANSI/TIA 568-2.D	Balanced Twisted-Pair Telecommunications Cabling and Components Standards
IEC 61156-5:2009+AMD1:2012 CSV	Multicore and symmetrical pair/quad cables for digital communications - Part 5: Symmetrical pair/quad cables with transmission characteristics up to 1 000 MHz - Horizontal floor wiring - Sectional specification
IEC 60332-1-2:2004	Tests on electric and optical fibre cables under fire conditions. Test for vertical flame propagation for a single insulated wire or cable. Procedure for 1 kW pre-mixed flame
IEC 61034-2:2005+A1:2013	Measurement of smoke density of cables burning under defined conditions - Part 2: Test procedure and requirements
RoHS	Compliant to the Restriction of Hazardous Substances

# Excel Cat6 Patch Lead U/UTP Unshielded LSOH Blade Booted 0.5m Grey (10-Pack)

Item Code: 100-395-10



WFD

Compliant to Waste Framework Directive

SCIP

Compliant - Does Not Contain Substances of Concern in Products

## Part Number Table

Part Number	Description
100-395-10	Excel Cat6 Patch Lead U/UTP Unshielded LSOH Blade Booted 0.5m Grey (10-Pack)
100-403-10	Excel Cat6 Patch Lead U/UTP Unshielded LSOH Blade Booted 0.3m Grey (10-Pack)
100-403-BK-10	Excel Cat6 Patch Lead U/UTP Unshielded LSOH Blade Booted 0.3m Black (10-Pack)
100-403-BU-10	Excel Cat6 Patch Lead U/UTP Unshielded LSOH Blade Booted 0.3m Blue (10-Pack)
100-403-GN-10	Excel Cat6 Patch Lead U/UTP Unshielded LSOH Blade Booted 0.3m Green (10-Pack)
100-403-OR-10	Excel Cat6 Patch Lead U/UTP Unshielded LSOH Blade Booted 0.3m Orange (10-Pack)
100-403-PK-10	Excel Cat6 Patch Lead U/UTP Unshielded LSOH Blade Booted 0.3m Pink (10-Pack)
100-403-RD-10	Excel Cat6 Patch Lead U/UTP Unshielded LSOH Blade Booted 0.3m Red (10-Pack)
100-403-VT-10	Excel Cat6 Patch Lead U/UTP Unshielded LSOH Blade Booted 0.3m Violet (10-Pack)
100-403-WT-10	Excel Cat6 Patch Lead U/UTP Unshielded LSOH Blade Booted 0.3m White (10-Pack)
100-403-YW-10	Excel Cat6 Patch Lead U/UTP Unshielded LSOH Blade Booted 0.3m Yellow (10-Pack)
100-415-10	Excel Cat6 Patch Lead U/UTP Unshielded LSOH Blade Booted 0.5m White (10-Pack)

Excel is a world class premium performing end to end infrastructure solution designed, Manufactured, supported and delivered without compromise.

Contact us at [sales@excel-networking.com](mailto:sales@excel-networking.com)



E&OE. Excel is a registered trade name of Mayflex Holdings Ltd.