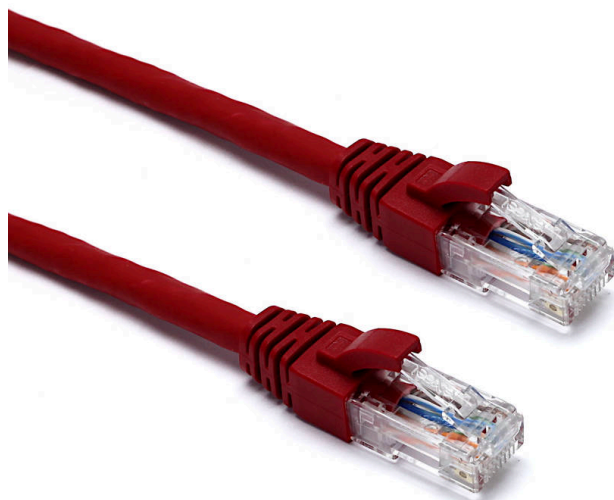


Excel Cat6A Patch Lead U/UTP Unshielded LSOH Blade Booted 2m Red

Item Code: 100-520

excel
without compromise.



✕ Cat6A compliant

✕ Specified to 500MHz

✕ Suitable for 10 Gigabit ethernet application

✕ EC verified

✕ Blade style 'slimline' moulded strain relief boot with clip protector

✕ Choice of length and colour

Product Overview

Excel Category 6A (Augmented Category 6) patch leads consist of 4 twisted pairs of 26 AWG stranded copper wires. These pairs are then cabled together, with different lay lengths to ensure optimum performance.

Staggered pin RJ45 plugs terminate the cable, and each lead is fitted with colour coded slimline moulded boots, suitable for use in high density router or switch blades.

Product Specifications

Feature	Values
Cable type	U/UTP
Category	6A (IEC)
Length	2 m
Type of connector connection 1	RJ45 8(8)
Type of connector connection 2	RJ45 8(8)
Outer sheath colour	Red
Strain relief boot	Moulded-on
Lockable	no
Strain relief boot colour	Red
Flame retardant version	yes

Excel Cat6A Patch Lead U/UTP Unshielded LSOH Blade Booted 2m Red

Item Code: 100-520



Halogen free	yes
Cable construction	1x4
AWG-size	26
Pin assignment	1:1

Product drawing



Standards

Applicable standard	Detail
ISO/IEC 11801-1:2017	Information technology - Generic cabling for customer premises: Part 1 General Requirements
EN 50173-1:2018	Information technology. Generic cabling systems - General requirements
ANSI/TIA 568-2.D	Balanced Twisted-Pair Telecommunications Cabling and Components Standards
IEC 61156-5:2009+AMD1:2012 CSV	Multicore and symmetrical pair/quad cables for digital communications - Part 5: Symmetrical pair/quad cables with transmission characteristics up to 1 000 MHz - Horizontal floor wiring - Sectional specification
IEC 60332-1-2:2004	Tests on electric and optical fibre cables under fire conditions. Test for vertical flame propagation for a single insulated wire or cable. Procedure for 1 kW pre-mixed flame
IEC 61034-2:2005+A1:2013	Measurement of smoke density of cables burning under

Excel Cat6A Patch Lead U/UTP Unshielded LSOH Blade Booted 2m Red

Item Code: 100-520



	defined conditions – Part 2: Test procedure and requirements
RoHS	Compliant to the Restriction of Hazardous Substances
WFD	Compliant to Waste Framework Directive
SCIP	Compliant - Does Not Contain Substances of Concern in Products

Part Number Table

Part Number	Description
100-500	Excel Cat6A Patch Lead U/UTP Unshielded LSOH Blade Booted 1m Grey
100-501	Excel Cat6A Patch Lead U/UTP Unshielded LSOH Blade Booted 2m Grey
100-502	Excel Cat6A Patch Lead U/UTP Unshielded LSOH Blade Booted 3m Grey
100-503	Excel Cat6A Patch Lead U/UTP Unshielded LSOH Blade Booted 5m Grey
100-509	Excel Cat6A Patch Lead U/UTP Unshielded LSOH Blade Booted 1m Blue
100-510	Excel Cat6A Patch Lead U/UTP Unshielded LSOH Blade Booted 2m Blue
100-511	Excel Cat6A Patch Lead U/UTP Unshielded LSOH Blade Booted 3m Blue
100-512	Excel Cat6A Patch Lead U/UTP Unshielded LSOH Blade Booted 5m Blue
100-519	Excel Cat6A Patch Lead U/UTP Unshielded LSOH Blade Booted 1m Red
100-520	Excel Cat6A Patch Lead U/UTP Unshielded LSOH Blade Booted 2m Red
100-521	Excel Cat6A Patch Lead U/UTP Unshielded LSOH Blade Booted 3m Red
100-522	Excel Cat6A Patch Lead U/UTP Unshielded LSOH Blade Booted 5m Red
100-529	Excel Cat6A Patch Lead U/UTP Unshielded LSOH Blade Booted 1m Yellow
100-530	Excel Cat6A Patch Lead U/UTP Unshielded LSOH Blade Booted 2m Yellow
100-531	Excel Cat6A Patch Lead U/UTP Unshielded LSOH Blade Booted 3m Yellow
100-532	Excel Cat6A Patch Lead U/UTP Unshielded LSOH Blade Booted 5m Yellow
100-539	Excel Cat6A Patch Lead U/UTP Unshielded LSOH Blade Booted 1m Green
100-540	Excel Cat6A Patch Lead U/UTP Unshielded LSOH Blade Booted 2m Green
100-541	Excel Cat6A Patch Lead U/UTP Unshielded LSOH Blade Booted 3m Green
100-542	Excel Cat6A Patch Lead U/UTP Unshielded LSOH Blade Booted 5m Green

Excel is a world class premium performing end to end infrastructure solution designed, Manufactured, supported and delivered without compromise.

Contact us at sales@excel-networking.com



E&OE. Excel is a registered trade name of Mayflex Holdings Ltd.