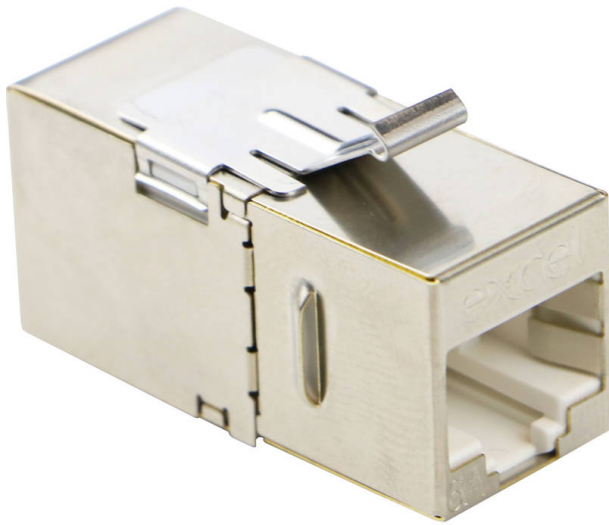


Excel Cat6A (FTP) 180 Degree Keystone Through Coupler

Item Code: 100-107



- ✕ Standard Keystone fitting
- ✕ Category 6A FTP
- ✕ 180 degree configuration
- ✕ Suitable for both screened and unshielded systems
- ✕ Standard RJ45 connection both ends
- ✕ Maintains channel performance

Product Overview

Excel range of Category 6A Through Couplers provides RJ45 in/out connections, allowing channels to be extended where required. Standard Keystone Jack profile, so fits all Keystone panels and outlets.

Product Specifications

Feature	Values
Construction type	Straight
Type of connector	2x RJ45
Shielded	yes
Category	6A (IEC)
Model	Jack/Jack
Type of fastening	Engage (snap)

Excel Cat6A (FTP) 180 Degree Keystone Through Coupler

Item Code: 100-107



Standards

Applicable standard	Detail
ISO/IEC 11801-1:2017	Information technology - Generic cabling for customer premises: Part 1 General Requirements
EN 50173-1:2018	Information technology. Generic cabling systems - General requirements
RoHS	Restriction of Hazardous Substances - Compliant
WFD	Compliant to Waste Framework Directive
SCIP	Compliant - Does Not Contain Substances of Concern in Products

Part Number Table

Part Number	Description
100-106	Excel Cat6 (FTP) 180 Degree Keystone Through Coupler
100-107	Excel Cat6A (FTP) 180 Degree Keystone Through Coupler
100-108	Excel Cat6 (FTP) 90 Degree Keystone Through Coupler
100-109	Excel Cat6A (FTP) 90 Degree Keystone Through Coupler

Excel is a world class premium performing end to end infrastructure solution designed, Manufactured, supported and delivered without compromise.

Contact us at sales@excel-networking.com



E&OE. Excel is a registered trade name of Mayflex Holdings Ltd.